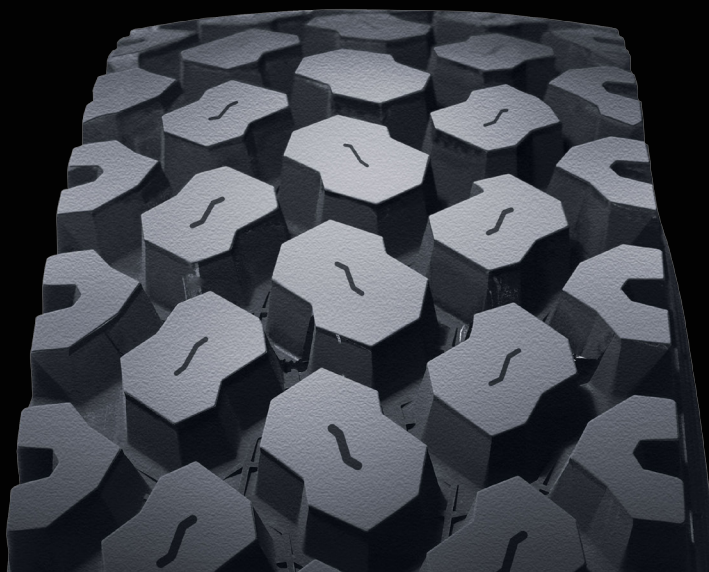


TJ01

DESIGNED FOR ON/OFF HIGHWAY TRACTION



Developed specifically to meet the demands of the Canadian logging, oil field and on/off road operations, the TJ01 is the evolution of the all-season, deep tread, maximum traction drive tire.



LONGEVITY

Large centre tread blocks, increased footprint size and the latest on/off tread rubber compounds.

EFFICIENCY

33/32" tread depth with a wider face and increased footprint for ultimate traction.

DEPENDABILITY

Multiple steel chafers in bead area and high elongation wire in steel belts to resist cut separations and lost casings.

Damage resistant on/off pattern and the latest cut resistant tread rubber compound resist chipping, cutting and stone drilling.

SIZES AND SPECIFICATIONS

Tire Size	Item No.	Std. Weight (Lbs)	Rim Width		Inflated Dimensions		Loaded Dimensions			Max. Load @ Max. PSI		Tread Depth
			Pref.	Alt.	Overall Width	Overall Diameter	Static Radius	Rev/ Mile	Section Width	Single	Dual	
11R24.5 16H TL	19051	141	8.25	7.50	10.9	44.6	20.9	468	12.0	7160 @ 120	6610 @ 120	33