

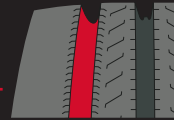
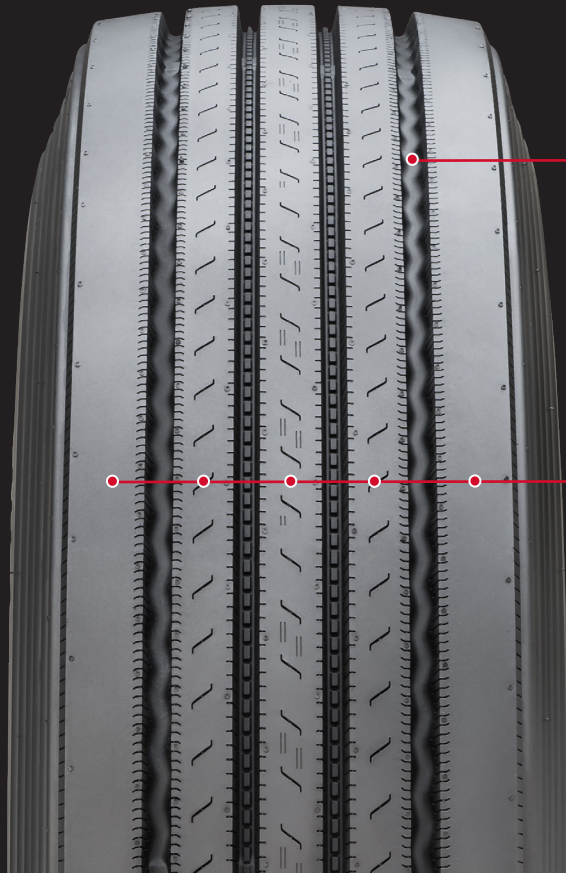
RY617

MORE FEATURES FOR EVEN MORE VALUE.

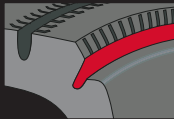


DELIVERING PREMIUM DRIVING

We've made it our goal to ensure that we're always offering strong, reliable performing products that serve as an exceptional value for fleets as well as owner/operators. The RY617 has all the traditional Yokohama qualities that savvy buyers have come to rely upon, along with the latest features that deliver long, even wear, enhanced wet traction and durability.



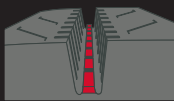
CONTOURED GROOVE WALLS
Optimized tread design for long, even wear.



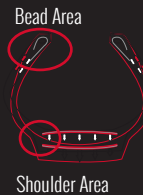
STRESS WEAR CONTROL GROOVE
Reduces contact pressure at the tread edge, providing increased resistance to shoulder step down wear and enhancing long even wear, particularly at the shoulder.



FIVE RIB TREAD DESIGN
Confident handling with advanced protection.



STONE EJECTORS
Keeps stones from imbedding into the tire to minimize drill damage for increased tread durability and casing life.



STEM-2 TECHNOLOGY
(StrainEnergyMinimization) extends the life of the casing by redirecting normally destructive stress forces.

TIRE SIZE	PART #	PLY RATING	TIRE WEIGHT (lbs)	RIM WIDTHS (inches)		INFLATED DIMENSIONS (inches)		TREAD DEPTH 1/32"	REV / MILE	LOADED DIMENSIONS (inches)		MAX LOAD (lbs) @ MAX PSI		MAX SPEED KPH
				PREF	ALT	OVERALL WIDTH	OVERALL DIAMETER			STATIC RADIUS	SECTION WIDTH	SINGLE	DUAL	
295/75R22.5	120161721	16H	112.0	9.00	8.25	10.9	40.1	18	520	18.7	12	6610 @ 120	6005 @ 120	120
11R22.5	120161722	16H	118.2	8.25	7.50	11.1	41.3	18	502	19.5	12	6610 @ 120	6005 @ 120	120
285/75R24.5	120161703	14G	112.1	8.25	8.25	10.8	41.3	18	499	19.8	11.8	6175 @ 110	5675 @ 110	120
11R24.5	120161724	16H	125.0	8.25	7.50	11.1	43.4	18	480	20.3	12	7160 @ 120	6610 @ 120	120

Yokohama tires are subject to an ongoing development process. Yokohama Tire (Canada) Inc. reserves the right to change product specifications at any time without notice or obligation.



YOKOHAMA EMERGENCY SERVICE - 1.800.282.1570

With a multitude of services available, Yokohama is saying "YES" to your fleets' emergency roadside tire needs around the clock and throughout Canada and United States.